



Eastbrooke Village, Maghull, L31

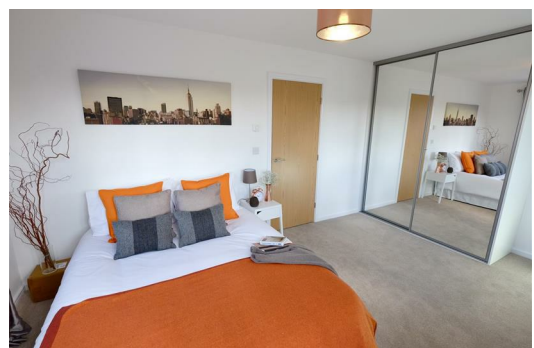
£1,325 PCM

Benefit from an array of LOCAL AMENITIES in the surrounding area. The LOCATION could not be more conveniently placed. Available Now.

We are pleased to present Eastbrook Village, a development comprising of two, three and four-bedroom homes in the town of Maghull. Just 10 miles north of Liverpool, and designed with a comfortable and contemporary lifestyle in mind, this development is the ideal sanctuary for young professionals and families alike.

The Grantham:

- Three bedroom modern property
- Stylish open-plan living room with French doors leading to rear garden
- Fully fitted modern kitchen with integrated white goods
- Two spacious double bedrooms and a third bedroom that can also be used as an office
- Modern family bathroom with separate shower cubicle decorated with Porcelanosa tiles



11 Little Owl Close, Maghull, L31 1GG



Energy Efficiency Rating		Environmental Impact (CO ₂) Rating	
Very energy efficient - lower running costs	Score	Very environmentally friendly - lower CO ₂ emissions	Score
A	96	A	
B	84	B	
C		C	
D		D	
E		E	
F		F	
G		G	
Not energy efficient - higher running costs		Not environmentally friendly - higher CO ₂ emissions	